



Solar Power Management™

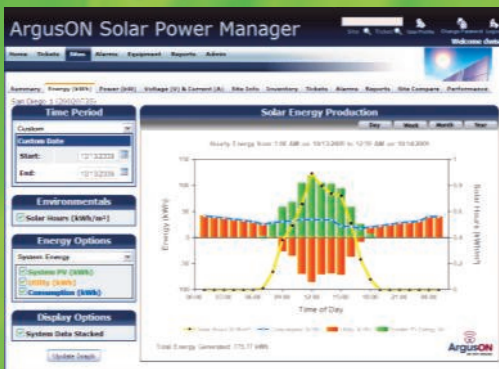


The ArgusON Solar Power Management™ solution is designed to support system owners, system integrators and PPA providers in a single solution offering:

- System performance data collection and reporting
- Predictive maintenance
- Comprehensive web portal
- Trouble ticket and alarm management system
- Site information and inventory system
- 24 / 7 / 365 National Operations Center support

The Solar Power Management™ solution incorporates the SPM-150 data acquisition and control hardware, revenue grade solar and demand meters, an environmental module and the Solar Power Manager™ web-based monitoring and management portal.

Energy Production Monitoring



Trouble Ticketing

Ticket ID	Site ID	Site Name	Type	Category	Status
861234	001234	Site 1234	Maintenance Urgent	High-Low Temperature Alarm	Closed

Alarm Management

Site ID	Site Name	System Size	City	Status	Alarms	Tickets
001234	Site 1234	100 kW	Atlanta	Operational	0	0
001235	Site 1235	200 kW	Atlanta	Operational	1	0

SPM-150 Data Acquisition Module

- Modbus interface to communicate with inverters, meters, sensor modules and other Modbus compliant devices
- Digital and analog inputs for sensor and dry contact connections
- Relay outputs to remotely control on-site systems
- Battery back-up in the event of commercial power failure
- Cellular modem connected via VPN to the ArgusON network for reliable data transmission
- On-board and removable memory for local data storage
- Performance and alarm data stored in the ArgusON data center

Solar and Demand Meters

- Modbus interface connection to the SPM-150
- CSI approved Revenue Grade meters

Environmental Module

- Modbus interface connection to the SPM-150
- Ambient and panel temperature sensors
- Irradiance meter, wind speed and direction sensors

National Operations Center (NOC)

- 24 / 7 / 365 staffed support center
- Monitoring and managing over 25,000 multi-industry sites
- Providing M2M solutions for over 10 years
- Alarm analysis and remote trouble resolution assistance
- Customized alarm escalation procedures
- Site access control
- Continuous site performance assessment

332 Nichol Mill Lane • Franklin, TN 37067
866-459-4102 • www.arguson.com

ArgusON Solar Power Management™ Solution

SPM-150 Specifications

FORM C RELAY OUTPUTS	6
4-20MA ANALOG INPUTS	4
0-5 VDC INPUTS	6
MODBUS INTERFACE	RS-485
CELLULAR COMMUNICATIONS	GPRS, CDMA
POWER SUPPLY INPUT VOLTAGE	120VAC
POWER SUPPLY INPUT CURRENT	0.5 A
OPERATING TEMPERATURE RANGE	-40 to 70C
BATTERY BACK-UP	Yes
ON-BOARD DATA STORAGE	16MB
DATA STORAGE EXPANSION	128MB
ENCLOSURE	NEMA 4x

Environmental Kit Specifications

RESOLUTION	16 bit
TEMPERATURE SENSOR TYPE	Type T
OPERATING TEMPERATURE RANGE	-10 to 70C
POWER SUPPLY INPUT	24VDC
ENCLOSURE	NEMA 4x

The complete ArgusON **Solar Power Management™** solution incorporates the SPM-150 data acquisition and control module, the Solar Meter and Demand Meter modules, the Environmental Kit module and the Solar Power Manager™ web-based monitoring and management portal. Combined with the 24/7/365 National Operations Center, ArgusON enables solar power systems to operate at peak efficiency.

Solar Meter Specifications

ENERGY METERING ACCURACY	0.2%
CT SECONDARY NOMINAL CURRENT	5 Amp
OPERATING TEMPERATURE RANGE	-20 to 70C
POWER SUPPLY INPUT VOLTAGE	90 to 260 VAC
ENCLOSURE	NEMA 4x

Demand Meter Specifications

ENERGY METERING ACCURACY	0.2%
CT SECONDARY NOMINAL CURRENT	mA
OPERATING TEMPERATURE RANGE	0 to 60C
POWER SUPPLY INPUT VOLTAGE	120 VAC
ENCLOSURE	NEMA 4x

ArgusON Solar Power Manager™

A comprehensive portal to monitor and manage all of your installations from a single interface including:

Summary: At a glance view of the energy production, consumption and positive environmental impact of your system

Energy: Energy (kWh) graphs over any time period enable analysis of the system and individual inverter performance

Power: Power (kW) graphs over any time period enable analysis of the system and individual inverter performance against the system installed benchmark

Voltage & Current: AC and DC voltage and current graphs of the entire system, individual inverters and strings.

Site Information: Maintains site addresses, contacts, system owner, access control, and utility information

Inventory: Maintain a list of all on-site equipment, installation dates, warranty dates, and serial numbers

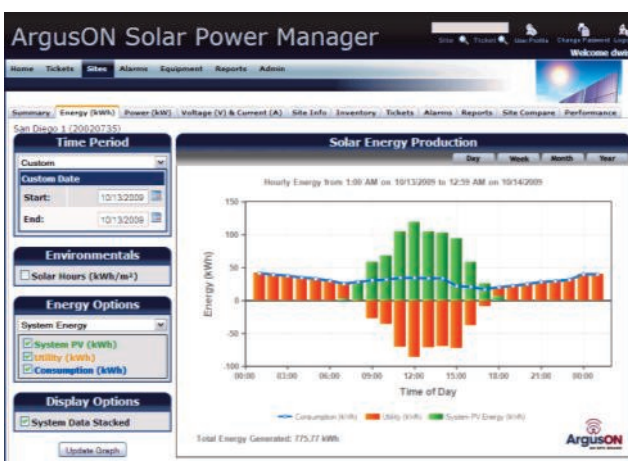
Tickets: Open, update, track and close trouble tickets to ensure system issues are resolved quickly

Alarms: View, track and analyze system alarms

Reports: Generate performance reports for analysis and government PBI reimbursements

Compare: Analyze multiple sites by comparing energy output across similar time frames

Multi-Site Management: View trouble tickets and alarms from multiple sites to enable efficient use of dispatched technicians and quicker resolution of field issues.



332 Nichol Mill Lane • Franklin, TN 37067
866-459-4102 • www.arguson.com

Product specifications subject to change without notice